

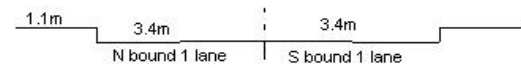
YEAR 2020

CORE STATION 1015

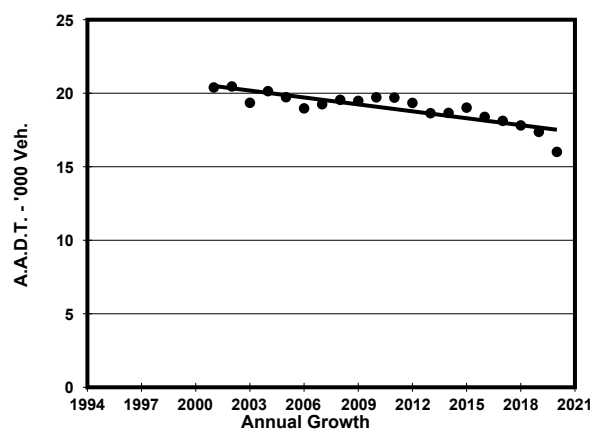
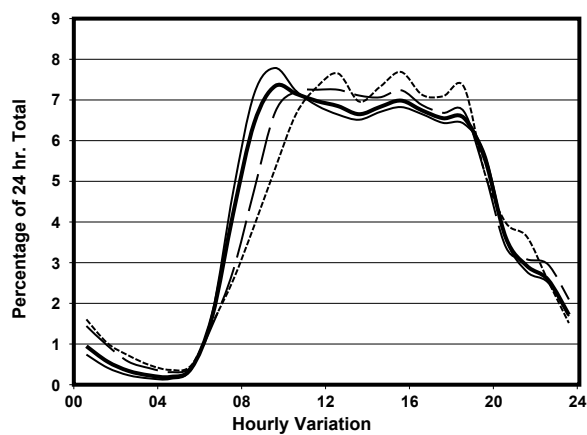
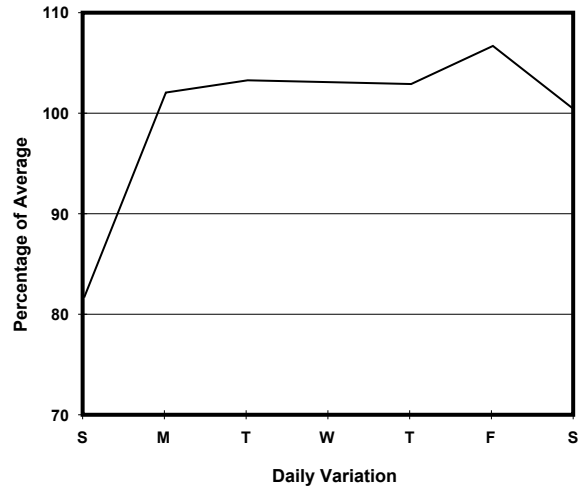
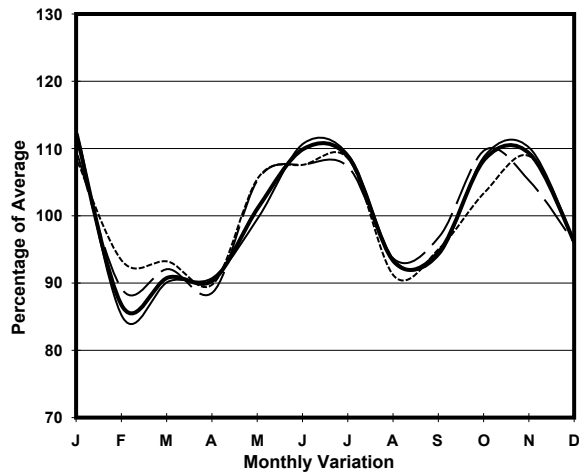
ROAD NETWORK MAJOR

ROAD TYPE DISTRICT DISTRIBUTOR

LINK STUBBS RD (from QUEEN'S RD E to STUBBS RD FO  
<H119> NORTHERN END)



## 1. TRAFFIC FLOW VARIATION AND GROWTH



— All day — Mon. - Fri. ..... Sat. - - - - Sun.

## 2. TRAFFIC CHARACTERISTICS (BY DIRECTION)

Parameter	All - Day	Mon. - Fri.	Sat.	Sun.
<b>SOUTH BOUND</b>				
A.A.D.T.	6890	7240	6840	5670
R 12 / 24 - %	78.4	78.9	77	76.7
R 16 / 24 - %	93.8	94.3	92.2	92.5
AM Peak Hour	0900-1000	0900-1000	0900-1000	0900-1000
One-way flow at AM peak hour	520	570	500	320
T - % (AM)	-	-	-	-
PM Peak Hour	1800-1900	1800-1900	1600-1700	1600-1700
One-way flow at PM peak hour	460	500	450	410
T - % (PM)	-	-	-	-
Prop.of commercial vehicles - 16 hr.	-	-	-	-
<b>NORTH BOUND</b>				
A.A.D.T.	9120	9500	9430	7540
R 12 / 24 - %	79.9	80.7	78.2	77.2
R 16 / 24 - %	94	94.6	92.4	92.2
AM Peak Hour	0900-1000	0900-1000	0900-1000	0900-1000
One-way flow at AM peak hour	650	730	590	380
T - % (AM)	-	-	-	-
PM Peak Hour	1600-1700	1600-1700	1800-1900	1800-1900
One-way flow at PM peak hour	640	660	670	600
T - % (PM)	-	-	-	-
Prop.of commercial vehicles - 16 hr.	-	-	-	-

## 3. OTHER INFORMATION AND COMMENT